



CATCH

an Interreg North Sea Region project

A webtool for municipalities and citizens

Adapt My City tool:
accelerating the transition to a
water sensitive city

In leaps and bounds to a water sensitive city

ABOUT THE TOOL

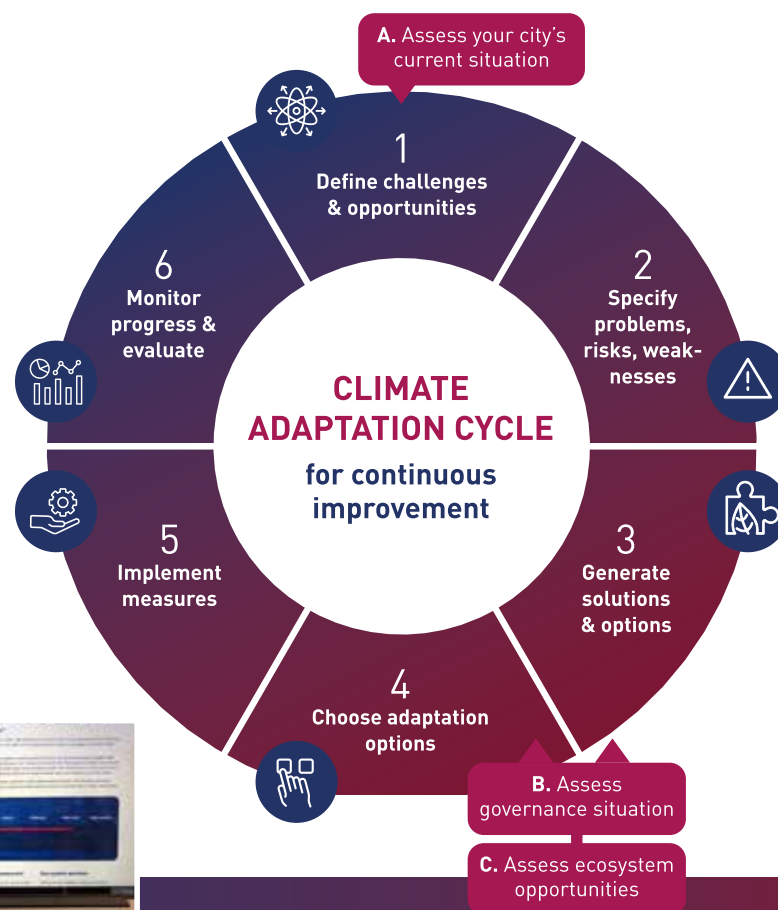
The Adapt My City tool is designed to address the specific needs of midsized cities. Midsized cities in the North Sea Region are challenged by climate change and extreme weather events. How can they get more insight into their climate resilience and find suitable solutions for climate change? How can they develop a strategy for the future? The Interreg NSR project CATCH has developed the Adapt My City tool to guide midsize cities in developing a tailor-made climate adaptation strategy.



COMPONENTS AND BENEFITS OF THE TOOL

- Adapt My City is a web-based tool that offers a climate adaptation cycle comprising three self-assessments: 1) assessing the city's current situation, 2) the governance situation, 3) the ecosystem services. These assessments are crucial components in a stepwise method or cycle to continuously develop, monitor and evaluate your city's tailor-made, long term adaptation strategy.

Continue reading on the next page →



- The Adapt My City tool showcases the good practices of climate adaptation, developed in the CATCH project by the partners from Sweden, Denmark, UK, Netherlands, Belgium, and Germany. They illustrate what mid-sized cities in the North Sea Region can do to become water sensitive cities and are therefore a valuable inspiration for other cities.
- The Adapt My City tool allows cities to start a cycle for continuous improvement in climate change adaptation suited for their situation. The climate adaptation cycle ends with an evaluation and monitoring step. To monitor, you start again with the self-assessment. This ensures continuous improvement. You can do this cycle until you reach the ideal climate adaptive city state: the water sensitive city.

Dr. Helge Bormann, Jade Hochschule: “The unique characteristic of the Adapt My City tool is its focus on self-assessment. Teams who work with the tool are enthusiastic about what they learn from assessing their city’s current situation, the governance situation and the ecosystem services.”

More information

Contact: catch@vechtstroom.nl

Visit the Adapt My City tool and start your city’s self-assessment today.

www.catch-tool.com

